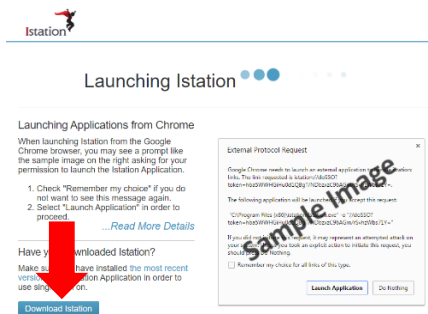
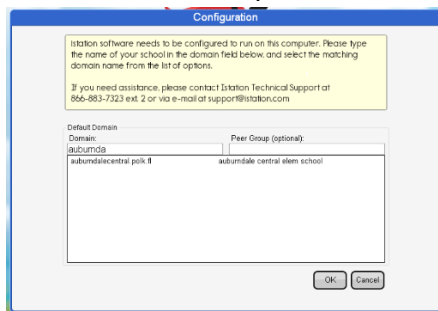


How to Access ClassLink and other Education Programs

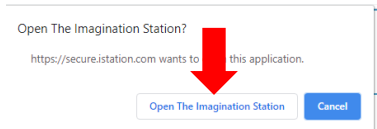
1. Open Chrome/Internet Explorer/Safari/Internet Web Browser to Polk County School Board Webpage <https://polkschoolsfl.com/classlink/>, then click on the correct ClassLink Log-In **OR**
2. You can ACCESS ClassLink {Freckle (K-5th), Smarty Ants (K-2nd), Istation (3rd-5th)} from any Windows or Android or Chrome Device by clicking this link **OR**
<https://launchpad.classlink.com/mypolk?autosamlogin=1>
3. You can ACCESS ClassLink {Freckle (K-5th), Smarty Ants (K-2nd), Istation (3rd-5th)} from any iPad by clicking this link <https://launchpad.classlink.com/mypolk>
4. Log in using student's username and password.
5. If you are on a desktop/laptop/iPad/Tablet you can click on Smarty Ants (K-2nd) and Freckle (K-5th) without downloading any additional software. 😊
6. BUT for iStation (3rd – 5th) you will need to first download the software before it will launch. Just click on the iStation icon and it will ask you to download iStation.



7. It will ask you what platform you are using iPad, Android, Chrome Device, Windows, Mac. (This will not work on your phone. 😞) Click on the correct link and download and install iStation (choose default install)
8. When this window pops up, begin to type auburndale under domain. It will pop up auburndalecentral.polk.fl, click on it, then click OK.



9. Click on EXIT to exit the program, go back to ClassLink and Relaunch iStation.
10. If this windows pops up just click on "Open The Imagination Station" and it will launch.



**** If you have any issues or problems please facebook message us. You can look us up on Facebook by searching Auburndale Central Elementary or @AuburndaleCentralPanthers *****